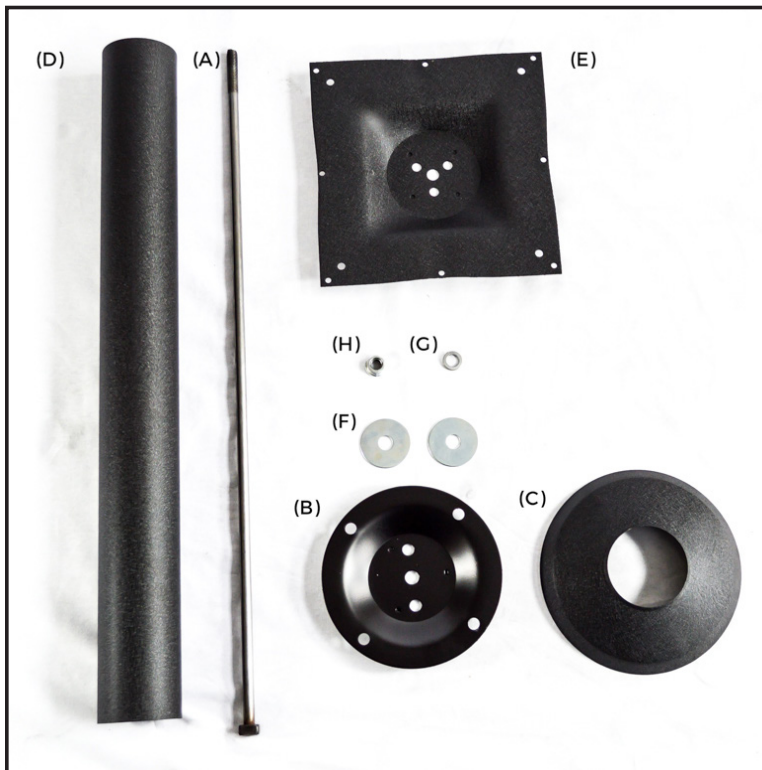


TableLegsOnline Bolt Down Table Base Assembly

a division of KE Hardware

For: BD83
Max Top size: 24 x 24"



Part List:

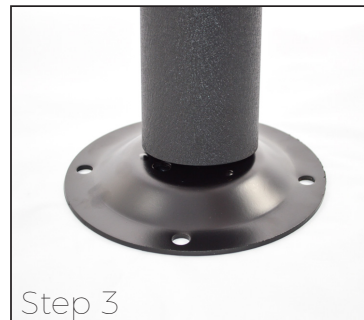
- A- Connecting Rod
- B- Base Plate
- C- Base Plate Cover
- D- Column
- E- Top Plate
- F- (x2) 2" diam Washer
- G- 3/4" Lock Washer
- H- M12 Hex Nut

Instructions:

- Step 1** - Place the Large Washer (F) on the Connecting Rod.
- Step 2** - Place the base plate (B) on the rod assembly.
- Step 3** - Slide the column (D) over the rod assembly.
- Step 4** - Slide the base plate cover (C) over the column assembly.
- Step 5** - Put the top plate (E) on the column making sure the connecting rod fits into the center hole of the plate. Place the second large washer (F) on the rod followed by the lock washer (G) and the hex nut (H).

Notes:

- This is a 2 person job.
- Make sure the 4 alignment bumps on the base plate and the top plate are inside the column while tightening the nut.
- Assemble the base unit before anchoring to the floor.
- Once the unit is anchored, revisit the Hex Nut (H) and tighten the unit securely



We recommend the use of a Lead or Steel Anchor Insert to fasten the base to the floor

***Anchor Insert Not Included**

