

Parts List:

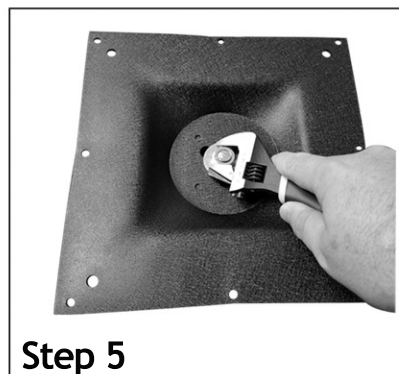
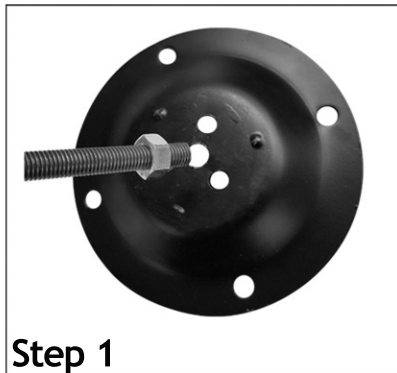
- A - Column
- B - Connecting Rod
- C - Top Mounting Plate (10" x 10" square)
- D - Bottom Mounting Plate (7" round)
- E - Hex Nut, M12 (x3)
- F - Washer (x2)
- G - Stainless Steel Cover

Assembly:

1. Twist (E) Hex Nut approximately 1" from the end of the (B) Connecting Rod
2. Place the end of (B) Connecting Rod through the top of (D) Bottom Mounting plate. Use (F) Washer and (E) Hex Nut to secure the (D) Bottom mounting plate.
3. Slide (A) Column over (B) Connecting Rod.
4. Slide (G) Stainless Steel Cover over (A) Column to cover the (D) Bottom Mounting plate.
5. Place (C) Top Mounting Plate onto (B) Connecting Rod. Use remaining (F) Washer and (E) Hex Nut to tighten plate to column.

Notes:

- Make sure the 4 alignment bumps on the base plate and the top plate are inside the column while tightening the nut.
- Assemble the base unit before anchoring to the floor.



We recommend the use of a Lead or Steel Anchor Insert to fasten the base to the floor

***Anchor Insert Not Included**

