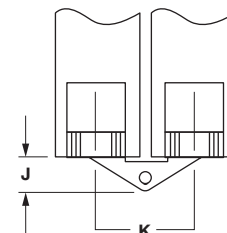
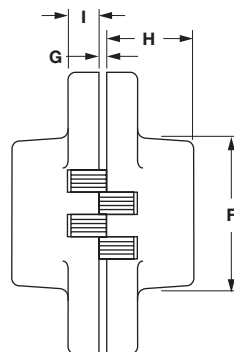
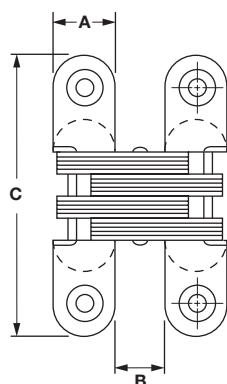
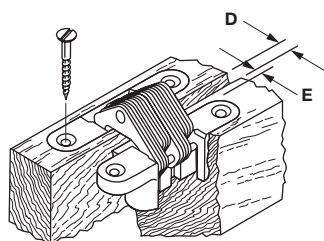
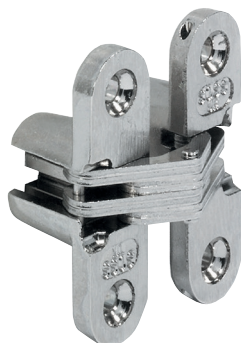
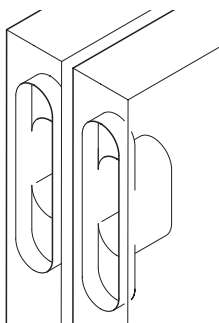


Opening angle: **180°**



Hole pattern



Soss Invisible Hinges

Material: Case: Zinc, die-cast; Linkage: Steel

Finish	Item No.							
satin brass	341.07.518	341.07.527	341.07.536	341.07.545	341.07.554	341.07.563	341.07.572	341.07.581
satin chrome	341.07.718	341.07.727	341.07.736	341.07.745	341.07.754	341.07.763	341.07.772	341.07.781
Wood thickness	13 - 18 (1/2"-11/16")	19 - 25 (3/4"-1")	19 - 25 (3/4"-1")	26 - 28 (1"-1 1/8")	29 - 31 (1 1/8"-1 1/4")	35 - 44 (1 3/8"-1 3/4")	45 - 50 (1 3/4"-2")	51 + (2"+)
Dimension								
A	9.5	12.7	12.7	15.9	19.1	25.4	28.6	34.9
B	7.5	9.1	9.1	11.5	13.5	18.3	22.2	27.0
C	42.9	44.5	60.3	69.9	95.3	117.5	117.5	139.7
D	2.8	2.8	2.8	3.6	4.0	5.6	9.5	12.7
E	2.4	3.2	3.2	4.0	4.8	6.4	6.4	7.1
F	22.2	19.1	31.8	34.1	52.4	65.9	61.9	74.6
G	0.8	0.8	1.6	1.2	1.2	1.6	1.6	1.6
H	11.5	18.3	18.3	23.0	27.4	36.5	41.7	49.2
I	5.6	4.8	6.4	7.1	9.5	11.9	10.3	11.9
J	4.8	6.4	6.4	7.9	10.3	14.3	13.5	17.5
K	17.1	21.8	21.8	27.4	32.5	43.7	50.8	61.9

Supplied With
Mounting screws

Dimensional data not binding. We reserve the right to alter specifications without notice.