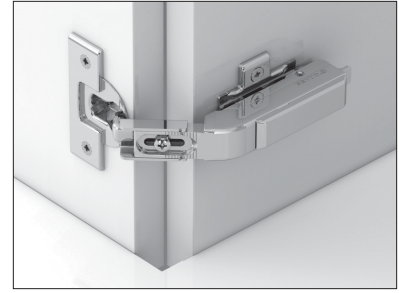


**Grass TIOMOS**

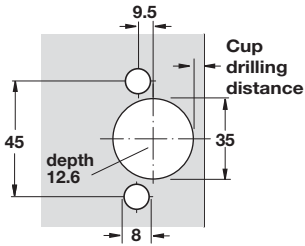
- With full-cup drill hole
- For connecting two folding doors
- For door thickness 14-22 mm
- Low cup drilling depth: 11.8 mm (15/32")
- Only available in self close
- 3-dimensional adjustment with appropriate mounting plate
- Use along with Tiomos 160°

**Note**

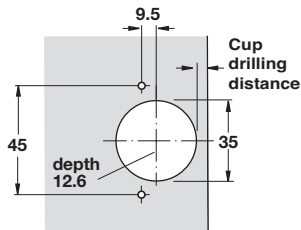
Dimensions in drawings and tables are calculated using factory settings and for mounting plate distance 0 mm.



**Dowel mounted**



**Screw mount**



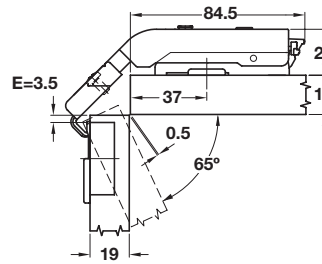
**PCC Pie-Cut Corner Hinge**



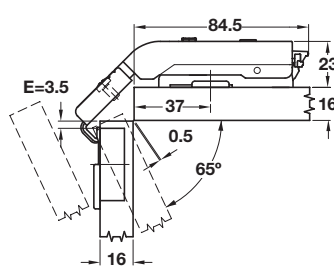
Material: Zinc Alloy; Finish: nickel-plated

Version	Item No.
screw	348.29.600
dowel	348.29.650

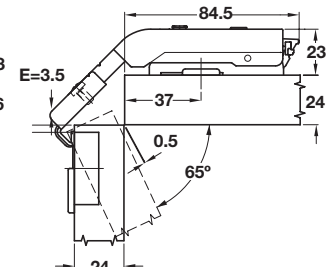
E = Distance to cup



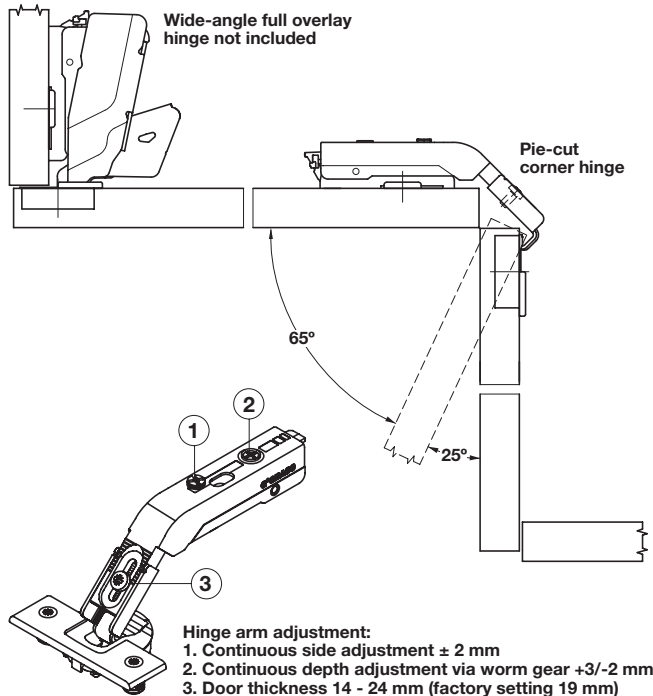
19 mm door thickness  
Mounting plate height 0 mm



16 mm door thickness  
Mounting plate height 0 mm



24 mm door thickness  
Mounting plate height 0 mm



9

Mounting plates and cover caps	Page 9.49
Flat head screws	pages 11.137-11.138, 11.140

Dimensions in mm  
Inches are approximate