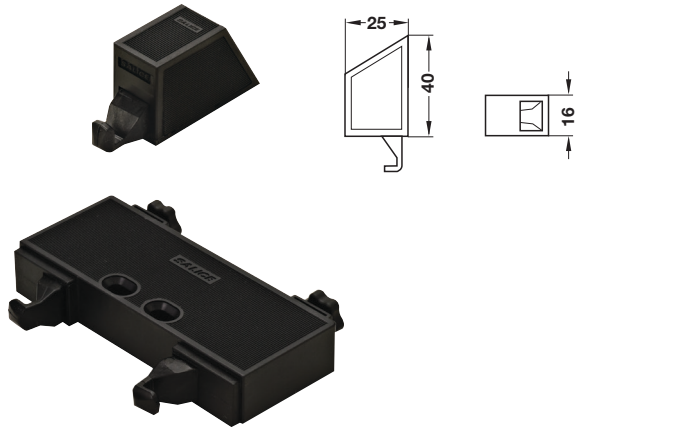


### Salice

- For doors taller than 1600 mm (63"), 2 push latches are recommended
- Aim hooks toward hinges
- Depth adjustment  $-1/+2.5$  mm by screw
- Lateral adjustment  $\pm 2$  mm by elongated mounting holes



### PUSH Latch

- Without adjustment

Material: Plastic

Color	Model	Item No.
black	DP3SN3R	329.44.301
beige	DP3SNBR	329.44.401

### Supplied With

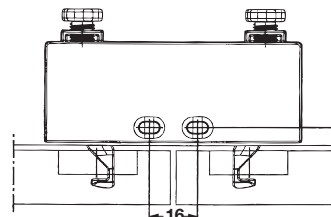
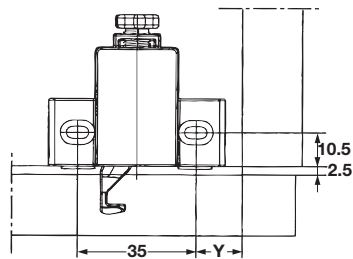
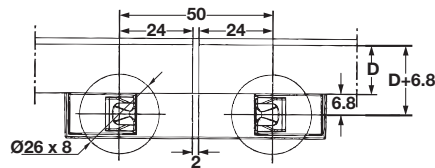
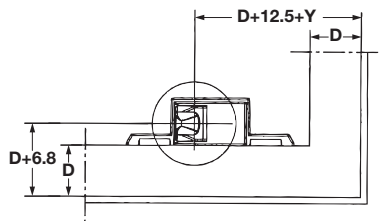
Mounting screws  
Cover caps

### PUSH Latch

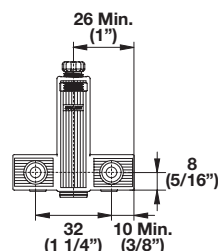
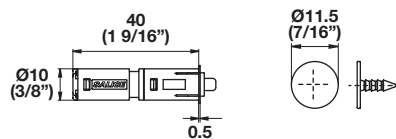
- With adjustment

Material: Plastic

Type	Color	Model	Item No.
single	black	DP4SN3	329.44.371
single	beige	DP4SNB	329.44.471
double	black	DP5SN3	329.44.391
double	beige	DP5SNB	329.44.491



**D** = Door Overlay on side and top of the cabinet  
**Y** = min. 8.5 mm



### Magnetic PUSH Latch

- With catch

Material: Plastic; Catch: Steel

Color	Model	Item No.
white	DPMB289	356.06.401

### Magnetic PUSH Latch Adapter

- Adjustable
- Without lip

Material: Plastic

Color	Model	Item No.
white	DP84SNBR	356.06.420

Dimensional data not binding. We reserve the right to alter specifications without notice.