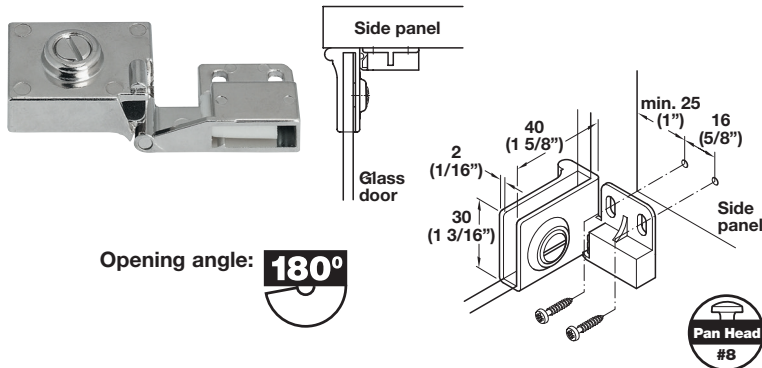


For Lightweight Glass Doors



**All-Metal Hinge**

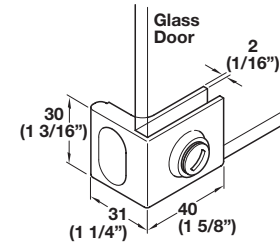
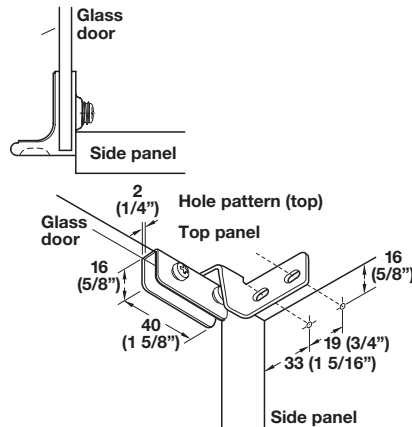
- With catch
- Econo version of a non-bore glass door hinge
- Screw-mounts to side of cabinet
- Vertical adjustment with oblong holes
- Maximum door weight: 4 kg (8.8 lbs.)
- Maximum door sizes: width 350 mm (13 3/4") height 800 mm (31 1/2")
- Minimum 2.5 mm gap between glass and panels
- Accommodates glass thickness up to 6 mm

Material: Zinc, die-cast

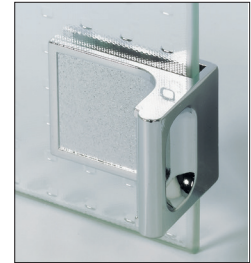
Finish	Item No.
textured black-plated matt	361.93.340
textured chrome-plated matt	361.93.240

**Supplied With**

- Left hinge
- Right hinge



No hole in glass required

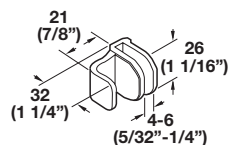


**Glass Door Pull**

- With plastic screw
- Glass thickness maximum 5 mm (3/16")

Material: Zinc, die-cast

Finish	Item No.
textured chrome polished	154.25.210
textured brass polished	154.25.810



**Glass Door Pull**

Material: Zinc, die-cast

Finish	Item No.
nickel matt	154.18.701

Dimensional data not binding. We reserve the right to alter specifications without notice.

Pan head screws pages 11.139-11.140

9

Dimensions in mm  
Inches are approximate

FC **9.133**