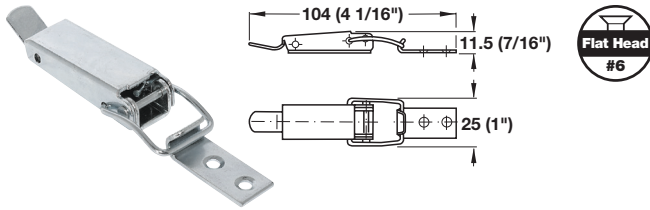


**Accessories for Extending Tables**

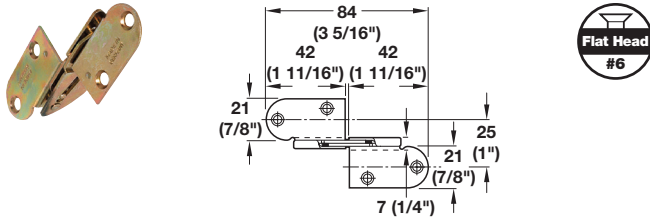


**Spring Clips**

- Screw-mounts underneath the table top

Material: Steel

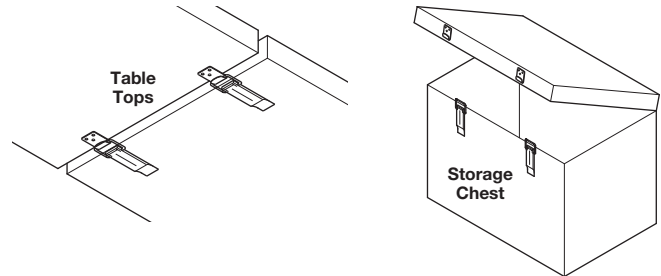
Finish	Item No.
zinc-plated	380.52.925



**Folding Table Hinges – Recessed**

Material: Steel; Finish: brass-plated

Table top	Recess depth	Length x Width	Item No.
19 (3/4")	16 (5/8")	84 x 47 (3 5/16" x 1 7/8")	341.30.508
22 (7/8")	19 (3/4")	84 x 51 (3 5/16" x 2")	341.30.526



**6**



**Drawer Pull Catches**

Material: Steel; Color: black

Overall length	Maximum width	Wire clamp Ø	Item No.
55 (2 3/16")	22 (7/8")	3 (1/8")	380.53.306
75 (3")	30 (1 3/16")	4 (3/16")	380.53.315

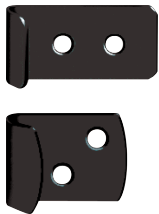
**Note**

Order strikes separately, below

**Strikes for Draw Pull Catches**

Material: Steel; Color: black

Length	Width	Thickness	Item No.
28 (1 1/8")	13 (1/2")	1.3 (1/32")	380.65.306
24 (1")	18 (11/16")	2.0 (1/16")	380.65.315



Dimensional data not binding. We reserve the right to alter specifications without notice.