

Top Attachment Pads

- Snap over rails

Material: Plastic

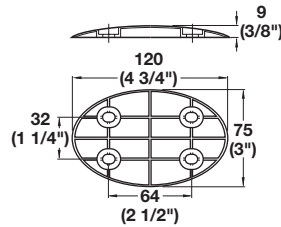
Color	Item No.
black	654.34.510

Packing: 10 pcs.

Note

Recommended placement, every 406 mm (16") (approximately)

6

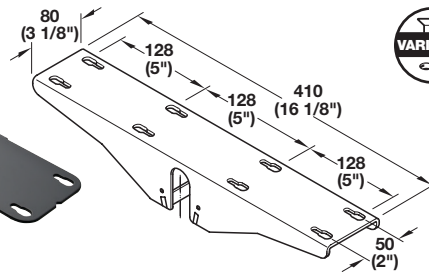


Linkit Table Connector

- For tables and table-leaves
- Mounts to the underside of the table top

Material: Zinc, powder-coated

Color	Item No.
dark gray	642.43.300



Top Stabilizer

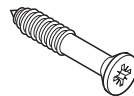
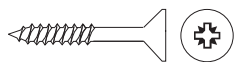
- For 24" Deep Single Rail styles

Material: Steel, powder-coated

Color	Item No.
black	654.46.301

Note

Recommended placement, every 762 mm (30") (approximately)



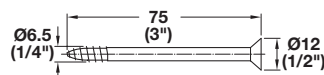
Countersunk Wood Screw

- Pozi Recess: 6.0 x 90 mm (#13 x 3 1/2")
- Protrudes into table top 23 mm (15/16")

Material: Steel

Finish	Item No.
zinc-plated	015.42.383

Packing: 100 pcs.



Countersunk Screw

- With M4 socket and special thread, for Ø5 mm (3/16") hole
- Protrudes into table top 10 mm (3/8")

Material: Steel

Finish	Item No.
zinc-plated	023.01.978

Varianta screws

Pages 11.146

Dimensions in mm
Inches are approximate