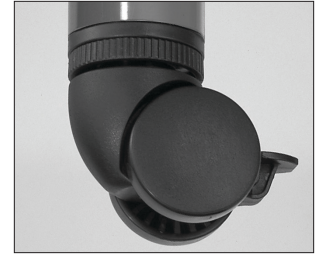


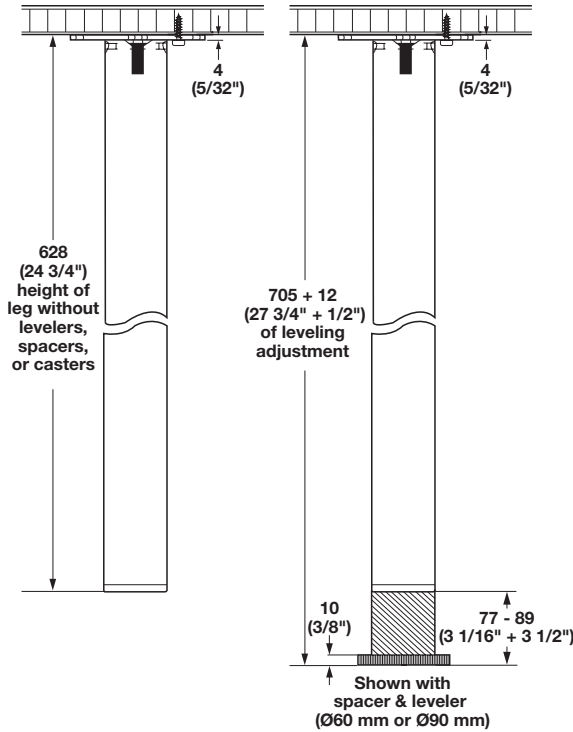
- Use 2 legs with levelers and 2 legs with casters, for a table which can be "wheel barrowed"
- Static load rating approximately 100 kg (220 lbs.) per leg



Leveler (Ø90) plus spacer



Caster



E-Leg Ø60 mm

- With threaded insert

Material: Legs: Steel, plated or epoxy-coated
Mounting plate: Steel; Color: black

Color/Finish	Item No.
black textured	635.60.386
satin nickel	635.60.485
silver/aluminum RAL 9006	635.60.985

Set Supplied With

- 4 legs
- 4 mounting plates
- Screws #9 x 1"

Note

Requires optional levelers, spacers or casters to be ordered separately (see below and next page)



Leveler Ø60 or Ø90 mm

Height: 10 mm (3/8")

Material: Plastic; Color: black

Diameter	Item No.
60 (2 3/8")	635.01.001
90 (3 1/2")	635.01.002

Caster with brake Ø60 mm

- Casters are adjustable up to 1/2" for leveling tables on uneven floors
 - Leveler plus spacer equals the same height as casters 77 mm (3 1/16")
- Height: 77 mm (3 1/16")

Material: Plastic

Color	Item No.
black	635.01.004

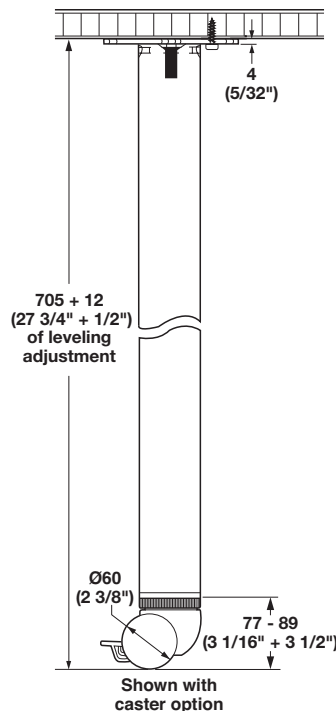


Spacer Ø60 mm

Height (leveler): 67 mm + 10 mm = 77 mm
(2 5/8" + 3/8" = 3 1/16")

Material: Plastic

Color	Item No.
black	635.01.003



6

Dimensions in mm
Inches are approximate

FC 6.48

KE Hardware Inc. - 3907 Falls Rd, Baltimore, MD 21211 - Phone (877) 220-3800 - buyhafele.com or kehardware.com

Dimensional data not binding. We reserve the right to alter specifications without notice.