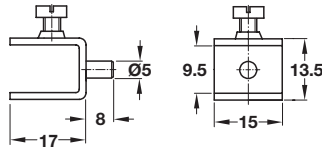


Ex-Cellent H® Ø5 mm

- Shelf clamp support
- For glass shelves from 6 - 10 mm

Material: Zinc die-cast; Clamping pins: plastic-coated

Finish	Item No.
nickel-plated	282.23.716

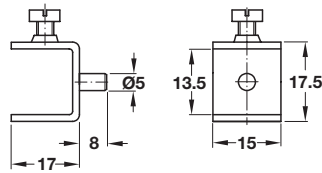


Ø5 mm

- With set screw
- For 9 mm glass thickness

Material: Steel; Set screw: Plastic

Finish	Item No.
nickel-plated	282.20.715



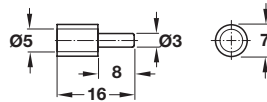
- For 13 mm glass thickness

Material: Steel; Set screw: Plastic

Finish	Item No.
nickel-plated	282.20.724

Note

To ensure that the set screw functions correctly, the shelf supports must be mounted with the set screw on the top. If the locking screw is on the bottom, the shelf will load it and could cause it to loosen.

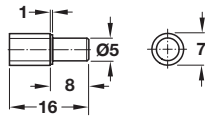


Ø3 mm

- With cap

Material: Steel; Cap: Plastic, transparent

Finish	Item No.
nickel-plated	281.40.703

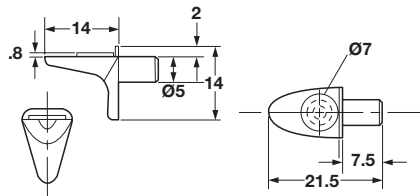


Ø5 mm

- With cap

Material: Steel; Cap: Plastic, transparent

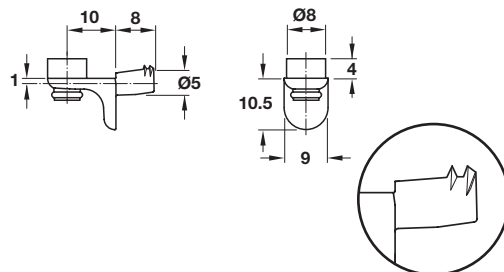
Finish	Item No.
galvanized	281.41.907



Ø5 mm

Material: Zinc die-cast with transparent rubber pad

Finish	Item No.
nickel-plated	282.24.731



Ø5 mm

- With 2 wedged ribs

Material: Zinc die-cast; Glass support: Plastic, transparent

Finish/Color	Item No.
nickel-plated	282.24.730
black	282.24.330

Note

These ribs anchor themselves in the system holes due to pressure from the shelf. This is an important feature for areas prone to earthquakes.

Dimensional data not binding. We reserve the right to alter specifications without notice.