

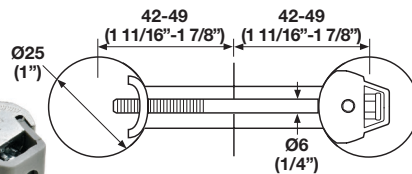
**Zipbolt Dogbone – UT**

- Improved to now accept a standard 4 mm hex bit (see below)
- Dogbone – UT Zipbolt suits edgetec (or similar) profile machining details cut-out
- Eliminate the need for surface mounted worktop joining strips

Material: Steel; Clamps: Zinc & Plastic

Item No.
262.96.945

**Note**  
Requires 4 mm hex driver

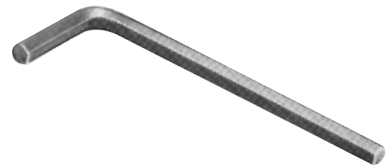


**Zipbolt Mini – UT**

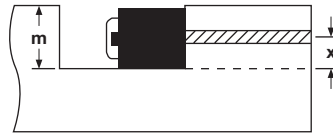
Material: Steel; Clamps: Zinc & Plastic

Item No.
262.96.946

**Note**  
Requires 4 mm hex driver



**Shaft Center Calculation**  
Shaft center (x)  
= Depth of bore (m) minus 6.5 mm (m)  
= Min. bore depth: 13 mm

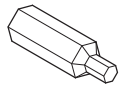


**Hex Key, 4 mm**

- With hexagon socket head

Material: Steel

Color	Item No.
black	008.28.044



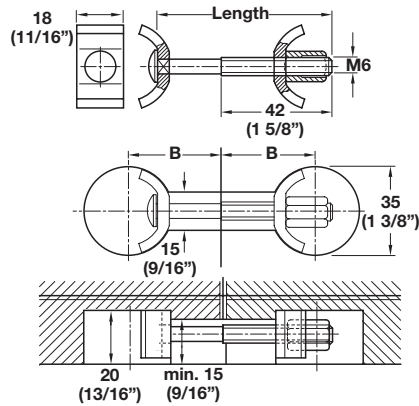
**Hex Socket Bit**

- 4 mm

Material: Hardened Tool Steel

Item No.
006.37.945

Packing: 10 pcs.

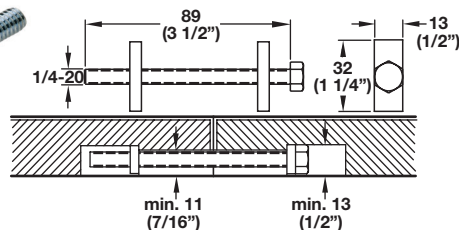
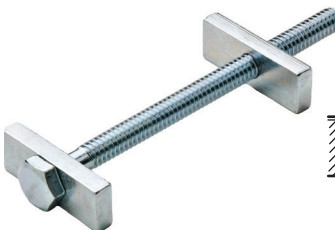


**Recessed Worktop Connectors**

- Allow work surfaces to be connected rapidly and securely
- The semi-circular fastening elements are pressed against the recess walls as tension is applied

Material: Steel; Finish: Zinc-plated

Length	Drilling Distance B	Item No.
65 (2 9/16")	from 32 to 41 (1 1/4" to 1 5/8")	262.96.211
150 (5 7/8")	from 75 to 84 (2 15/16" to 3 5/16")	262.96.220



**Zipbolt Mini – UT**

- Easily installed and quickly assembled for material from 16 mm (5/8")
- Provides even pressure between the surface joint pieces without glue
- The joint can be disassembled if necessary  
Length: 89 mm (3 1/2")

Material: Steel

Finish	Item No.
zinc-plated	262.93.952