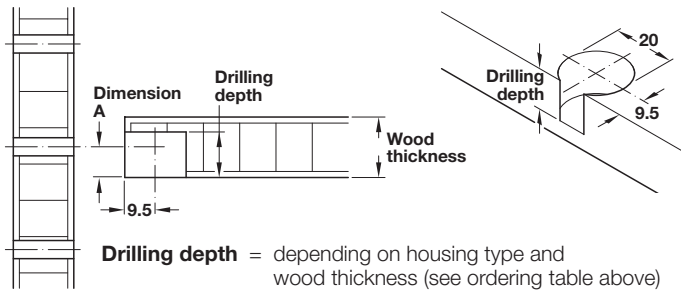
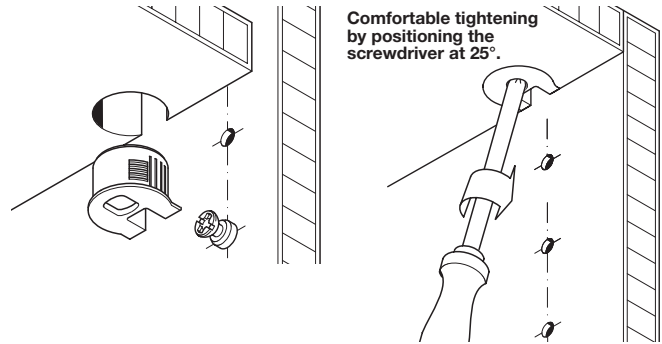


**Rafix 20 Housing**

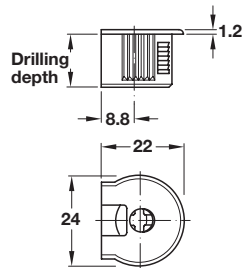
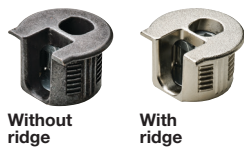


**Drilling depth** = depending on housing type and wood thickness (see ordering table above)

**Dimension A** = 1/2 of the wood thickness (see ordering table above)



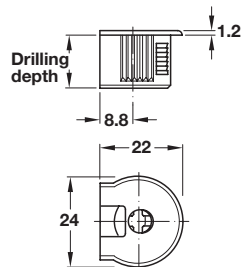
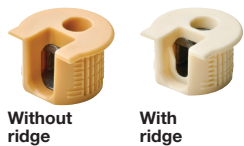
For wood thickness from:	Dim. A mounting center	Drilling depth
16	8.0	12.7+0.2 mm
19	9.5	14.2+0.2 mm



- With tightening element

Material: Zinc alloy

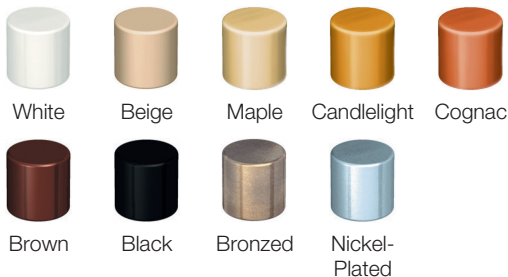
For wood thickness	Finish	Without ridge	With ridge
16	nickel-plated	263.11.703	263.15.703
	bronzed	263.11.103	-
19	nickel-plated	263.11.705	263.15.705
	bronzed	263.11.105	263.15.105



- With tightening element

Material: Plastic; Tightening element: Zinc alloy

For wood thickness	Color	Without ridge	With ridge
16	white	263.10.703	263.14.703
	beige	263.10.403	263.14.403
	brown	263.10.103	263.14.103
	black	263.10.303	263.14.303
19	white	263.10.705	263.14.705
	beige	263.10.405	263.14.405
	maple	263.10.165	263.14.106
	candlelight	263.10.125	263.14.605
	cognac	263.10.175	263.14.107
	brown	263.10.105	263.14.105
	black	263.10.305	263.14.305



Dimensional data not binding. We reserve the right to alter specifications without notice.