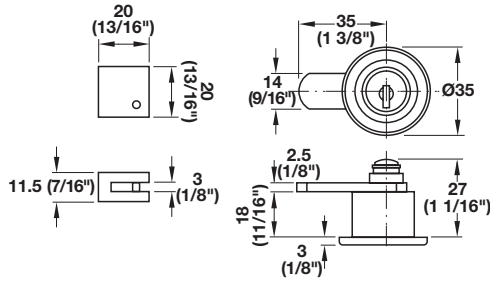
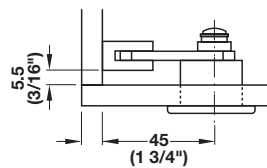


- Locking travel: 180° (locking not necessary)
- Plate cylinder locking mechanism
- 200 different key changes possible
- Installation: UV glass adhesive bonds



**Installation**



Overlay Mounting

**Cam Lock**

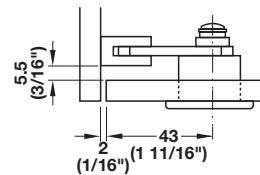
- For single doors
- Glass thickness max: 12 mm (1/2")

Material: Stainless Steel, matt

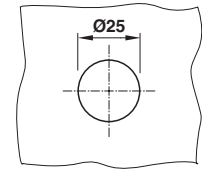
Version	Item No.
different key changes	233.47.000
keyed alike (key change SG 1)	233.47.001

**Supplied With**

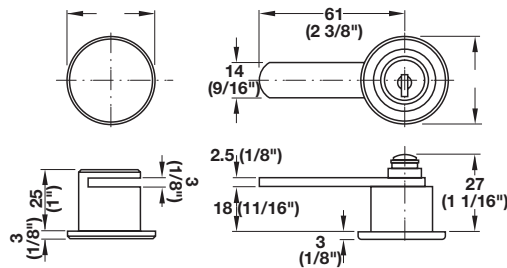
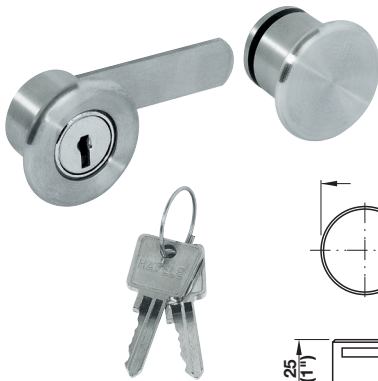
2 keys  
Instructions



Inset Mounting



Drilling Pattern



**Cam Lock**

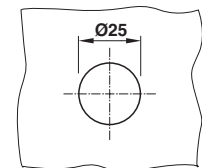
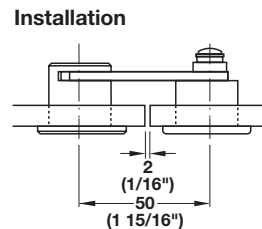
- For double doors
- Glass thickness max.: 12 mm (1/2")

Material: Stainless Steel, matt

Version	Item No.
different key changes	233.47.040
keyed alike (key change SG 1)	233.47.041

**Supplied With**

2 keys  
Instructions



Drilling Pattern