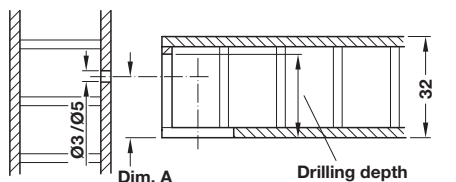
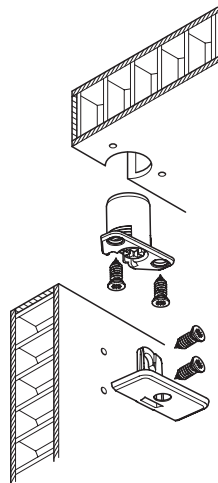
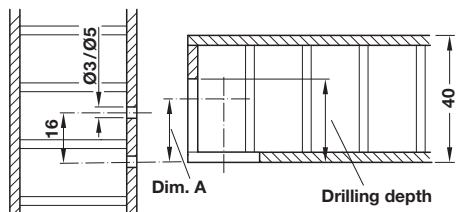


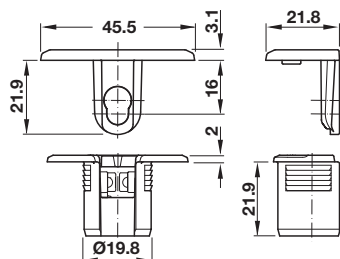
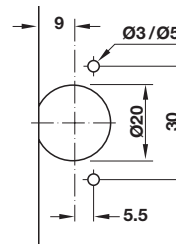
- For lightweight panels with a surface layer of 4 mm or greater
- Suitable for lightweight panels without frame
- For wood thickness 32 to 60 mm (1 1/4" - 2 3/8")



For 32 mm thick panels



For 40 mm thick panels

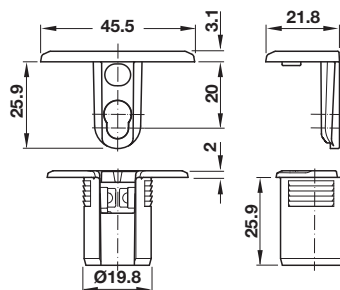


Tab 20 HC - for 32 mm thick panel

- Drill hole Ø: Cup insert 20 mm, Varianta special screw 3 or 5 mm
- PZ2, PH2 or flat blade
- Panel thickness: 32 – 50 mm
- Dimension A: 16 mm
- Drilling depth: 22 mm

Material: Support and tightening element: Zinc alloy
Cup insert: Plastic; Color: natural

Finish	Item No.
black	263.95.332
nickel-plated	263.95.732

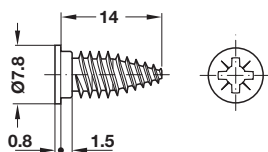


Tab 20 HC - for 40 mm thick panel

- Drill hole Ø: Cup insert 20 mm, Varianta special screw 3 or 5 mm
- PZ2, PH2 or flat blade
- Panel thickness: 40 – 60 mm
- Dimension A: 20 mm
- Drilling depth: 26.5 mm

Material: Support and tightening element: Zinc alloy
Cup insert: Plastic; Color: natural

Finish	Item No.
black	263.95.335
nickel-plated	263.95.735



Varianta HC Screws

- A large selection of standard fittings can be attached to surface layers of 4 mm and above using Varianta HC screws

Material: Steel; Finish: nickel-plated

For drill hole Ø	Thread length L	Item No.
3	14	013.30.900
5	14	013.30.910