

Battery Powered Electronic Locking Systems StealthLock

StealthLock electrically controls cabinet doors and drawers. It operates in passage or cycle modes, and is released with an RF controlled key pad transmitter.

Features

- One key pad transmitter can activate an unlimited number of locks within a 4.5 m (15 ft.) range
- Lock powered by 4-AAA batteries (not included)
- Low battery indicator on key pad transmitter and lock
- Meets ANSI/BIFMA 50 lbf. pull strength specifications
- Slim design mounts in 1/2" drawer suspension clearance
- For left or right hand operation
- Toggle lock or timed unlock delay

Areas of Application

- For interior use
- For installation in wood, laminate or plastic cabinets and drawers



Technical Data:

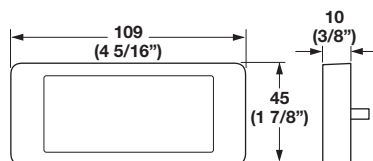
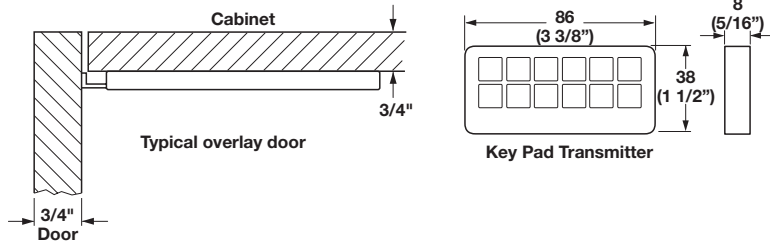
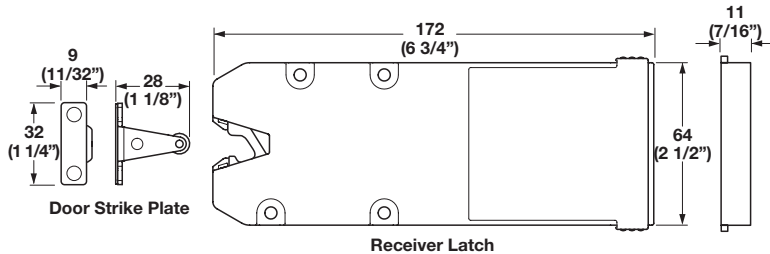
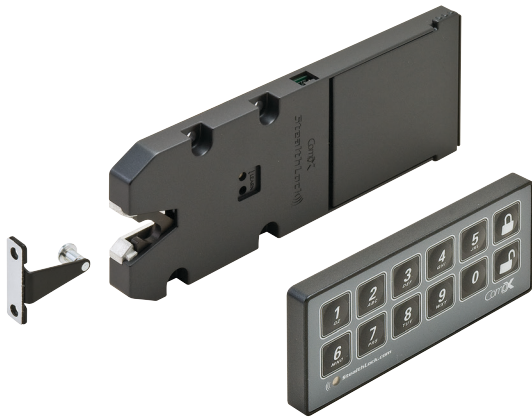
| | |
|------------------------|------------------------------|
| Tensile load limit: | 445 N. (100 lbf.) |
| Environmental | |
| Operating temperature: | 10° to 49° C (50° to 120° F) |
| Humidity (operating): | 95% |
| Electrical | |
| Supply voltage: | 6 VDC (4 - AAA batteries) |
| Connections: | Battery pack, self-contained |
| Battery Life: | 4000 lock cycles |
| Standards Compliance | FCC |

Solutions Available

- Standard: For most general office or residential applications.*
- Dedicated: Factory programmed. For projects; Ideal for assigned lockers and fitness lockers.**

Modes Available - Both Solutions

- Self-Lock Mode (Cycle)
- Passage/Manual Lock Mode (toggle)
- Single Use Mode (day use)



Battery Powered RF Cabinet Lock Set

Material: Receiver Latch and Key Pad: Plastic
 Door Strike Plate: Steel

| Color | Item No. |
|-------|------------|
| black | 237.56.350 |

Supplied With

- Installation tool
- Mounting screws
- Instructions



Drywall Mounting Plate

- Allows mounting to any flat surface or wall

Material: Aluminum

| Finish | Item No. |
|--------------|------------|
| satın nickel | 237.56.974 |

Supplied With

- Mounting screws

Key Pad Mounting Plate

Material: Aluminum

| Color | Item No. |
|-------|------------|
| gray | 237.56.994 |

Note

Powered solution and emergency power available upon request.

Customized, pre-programmed locking systems available upon request.

Dimensional data not binding. We reserve the right to alter specifications without notice.