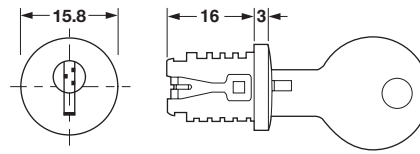


### Modular Removable Core Locking System – Timberline

- Separates the lock core from cylinder housing
- Any combination of locking systems can be obtained
- Manufacturer can install fully functional locking systems
- Simplifies the planning and changing of locking systems
- Lock cores can be replaced with the aid of the removal key



#### Snap-In Lock Core

- Suitable For Any Cylinder Body
- 5 plate levers = 500 possible key changes

#### Keyed Different

Material: Zinc die-cast, unfinished; Plate levers: Brass; Keys: Brass; Finish: nickel-plated

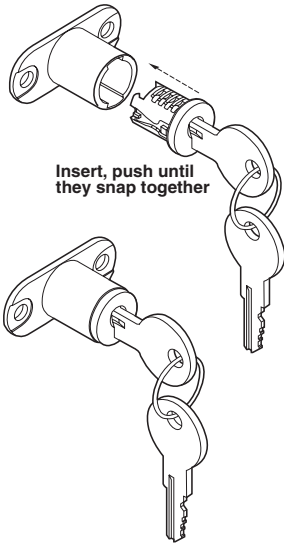
Lock face:	Nickel Polished	Nickel Matt	Brass Polished	Bronzed Epoxy	Brass Antique	Black Epoxy
Item No.	210.04.606	210.04.710	210.04.106	210.04.812	210.04.106	210.04.302
Timberline No.	LP-100	LP-700	LP-500	LP-400	LP-200	LP-300

#### Keyed Alike

Lock face:	Nickel Polished	Nickel Matt	Brass Polished	Bronzed Epoxy	Brass Antique	Black Epoxy
Keying #'s	Item No.					
100 TA	210.04.615	210.04.720	210.04.812	210.04.115	210.14.111	210.04.311
101 TA	210.04.624	210.04.721	210.04.821	210.04.124	210.14.120	210.04.320
102 TA	210.04.633	210.04.722	210.04.830	210.04.133	210.14.139	210.04.339
103 TA	210.04.642	210.04.723	210.04.849	210.04.142	210.14.148	210.04.348
104 TA	210.04.651	210.04.724	210.04.858	210.04.151	210.14.157	210.04.357
105 TA	210.04.660	210.04.725	210.04.867	210.04.160	210.14.166	210.04.366
106 TA	210.04.679	210.04.726	210.04.876	210.04.179	210.14.175	210.04.375
107 TA	210.04.688	210.04.727	210.04.885	210.04.188	210.14.184	210.04.384
108 TA	210.04.697	210.04.728	210.04.894	210.04.197	210.14.193	210.04.393
109 TA	210.04.704	210.04.729	210.04.901	210.04.204	210.14.200	210.04.400

#### Supplied With

2 keys



#### Cylinder Rosette

- For any cylinder body

Material: Steel



Finish/Color	Timberline No.	Item No.
nickel polished	BZ-100	210.04.062
nickel matt	BZ-700	210.04.070
brass polished	BZ-500	210.04.054
bronzed	BZ-400	210.04.017
brass antique	BZ-200	210.04.053
black	BZ-300	210.04.035

#### Note

Requires Ø19 mm hole for installation with lock cylinder.



#### Protective Cap

- Keeps interior of cylinder housing free of paint and dirt after lock is installed.

Material: PVC

Color	Timberline No.	Item No.
orange	CC-100	210.02.095



#### Removal Key

- To remove lock cores

Material: Brass

	Timberline No.	Item No.
	KY-500-TA	210.02.004



#### Master Key

- Fits all TA lock cores (see table above)

Material: Brass

	Timberline No.	Item No.
	KY-101-TA	210.02.059

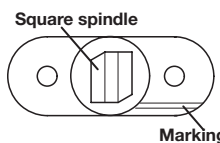


#### Key Blanks

- Can be cut to replace broken or lost keys

Material: Brass

	Timberline No.	Item No.
	KY-R17	210.02.005



#### Note

The cylinder housings and lock cores are marked (see diagram below). A series of furniture doors can all be locked with the same direction of turn, if the markings are positioned identically.