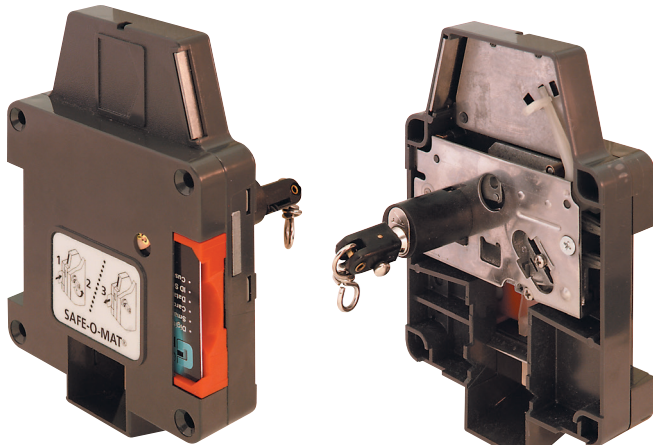


SAFE-O-MAT® 500 Series – Card

- For use on wood, laminate and plastic lockers

Areas of Application

- Fitness Centers
- Medical Facilities
- Hospitality



To Lock

1. Insert card into slot
2. Close door, turn key to extend bolt
3. Remove key

To Unlock

Insert and turn key to retract bolt, card can be removed, key is again trapped.

Technical Data

Size (L × H × W) 110 mm × 178 mm × 58 mm
(4 5/16" × 7 1/8" × 2 1/4")
Weight 350 g (12 oz.)
Temperature 0°C – 60°C (32°F – 140°F)
Humidity 10% – 95% (non-condensing)

Card Lock

- Available in Left Hand and Right Hand orientation

Material: Plastic

Color	Item No.
gray	231.53.50X

Supplied With

4 mounting screws
Outside instruction decal

Note

Facility can either provide their own card or order the ID cards listed below.
Screw length depends on door thickness.

ID Card

- Punched for card lock 3 3/8" × 2 1/8"

Material: Plastic

Color	Item No.
white	231.53.500.X

Note

Please contact Häfele at 1-800-423-3531 and have the following information available:
"Handing" specifications
Key Plan specifications

Each Lock requires (sold separately):

Cylinder core and user key

Every Order requires (sold separately):

Cylinder change (removal) key, and 1 Master key

For all applicable Mounting/Programming Instructions and Specifications please visit www.hafele.com.

Card Punch

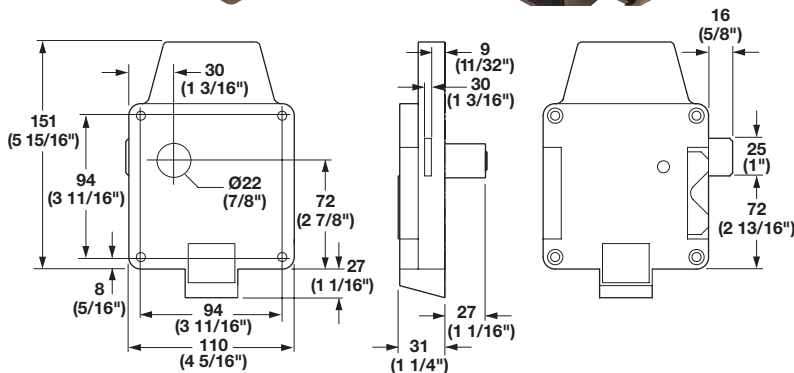
- Used by facility to punch a specific hole in membership cards for insertion into SAFE-O-MAT® 500 Card Lock

Material: Steel

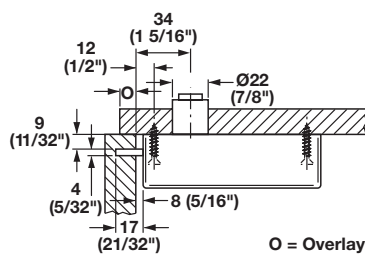
Finish	Item No.
chrome-plated	231.53.999

Note

Membership cards not included

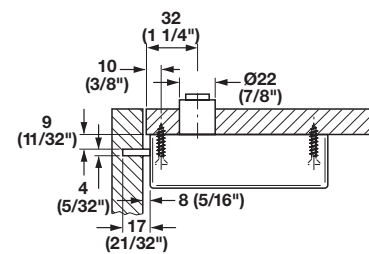


Overlay Installation

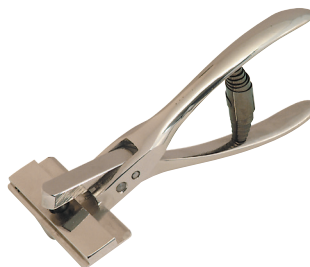


O = Overlay

Inset Installation



For door thickness: 13–26 mm (1/2"–1")
Minimum cabinet width: 140 mm (5 1/2")



Dimensional data not binding. We reserve the right to alter specifications without notice.