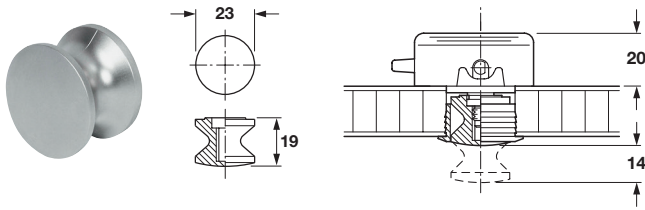


Push-Button Knobs and Rosettes

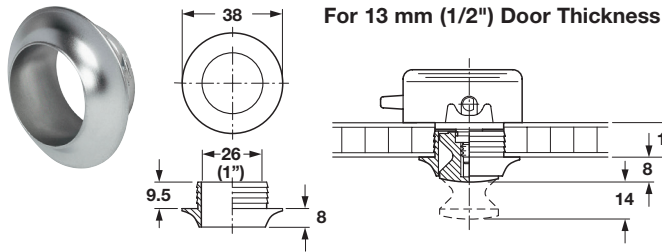


Push-button Knob

- For 13–19 mm (1/2"–3/4") door thickness

Material: Plastic, electro-plated

Finish/Color	Item No.
nickel-plated matt	229.01.677
brass-plated polished	229.01.873
chrome-plated polished	229.01.270
black	229.00.652



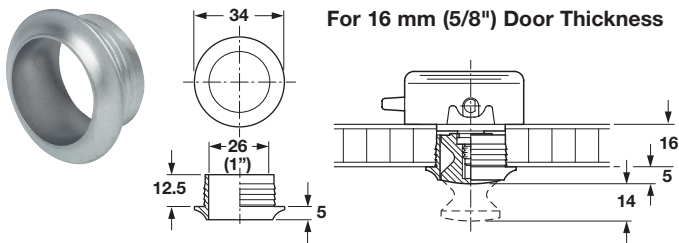
For 13 mm (1/2") Door Thickness

Rosette, round

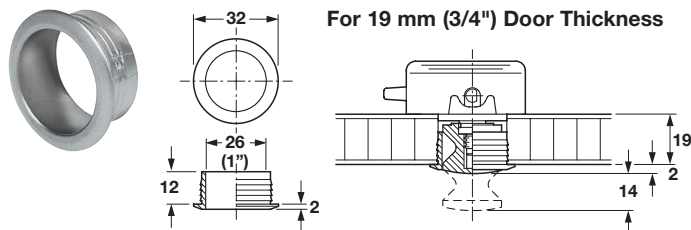
- For 13 mm (1/2"), 16 mm (5/8"), or 19 mm (3/4") door thickness
- Use Ø26 mm (1") drill bit

Material: Plastic, electro-plated

Finish	13 mm (1/2")	16 mm (5/8")	19 mm (3/4")
nickel-plated matt	229.03.608	229.03.617	229.03.626
brass-plated polished	-	-	229.03.822
chrome-plated polished	-	-	229.03.220
black	-	-	229.02.670



For 16 mm (5/8") Door Thickness



For 19 mm (3/4") Door Thickness

Dimensional data not binding. We reserve the right to alter specifications without notice.