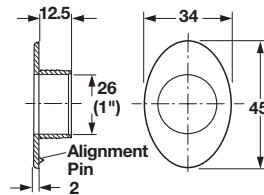
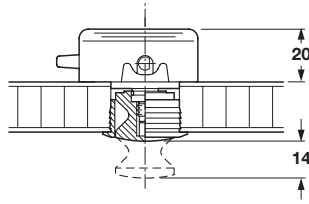
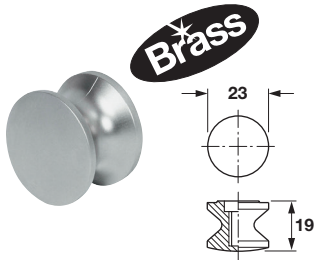
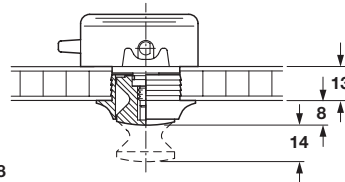
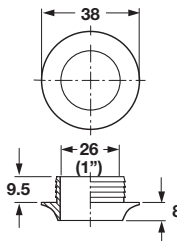


Push-Button Knobs and Rosettes

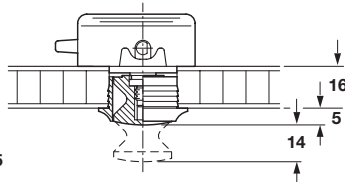
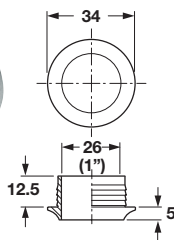
- Solid brass
- Meets 96 hour salt spray test
- Proper protection should be placed over rosettes before pounding in to prevent marring
- Oval rosettes include alignment pin to keep rosette from twisting



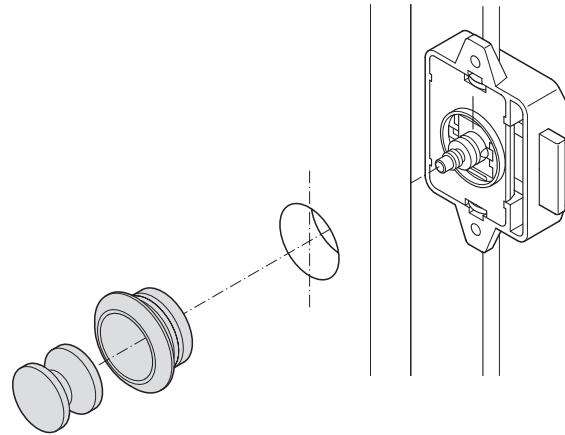
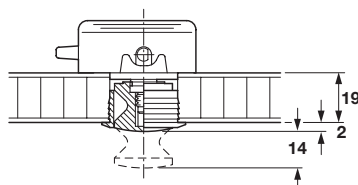
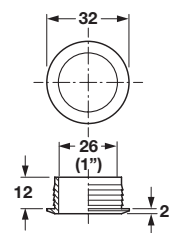
For 13 mm (1/2") Door Thickness



For 16 mm (5/8") Door Thickness



For 19 mm (3/4") Door Thickness



Push-button Knob

- For 13–19 mm (1/2"–3/4") door thickness

Material: Brass, plated, lacquered

Finish	Item No.
brass polished	229.10.820
chrome polished	229.10.220
nickel-plated, matt	229.10.320
black nickel	229.10.620

Rosette, oval

- For 19 mm (3/4") door thickness
- For 16 mm (5/8"), or 13 mm (1/2") material, use shim
- Use Ø26 mm (1") drill bit

Material: Brass, plated, lacquered

Finish	Item No.
nickel-plated, matt	229.11.740

Rosette, round

- For 13 mm (1/2"), 16 mm (5/8"), or 19 (3/4") door thickness
- Use Ø26 mm (1") drill bit

Material: Brass, plated, lacquered

Finish	13 mm (1/2")	16 mm (5/8")	19 mm (3/4")
brass polished	–	229.11.815	229.11.820
chrome polished	229.11.210	229.11.215	229.11.220
nickel-plated, matt	229.11.310	229.11.315	229.11.320
black nickel	–	229.11.620	–

10

Dimensions in mm
Inches are approximate

Shim

Page 10.57

Dimensional data not binding. We reserve the right to alter specifications without notice.