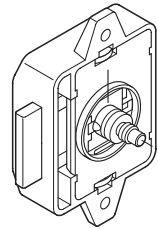
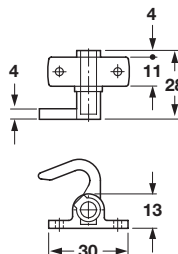
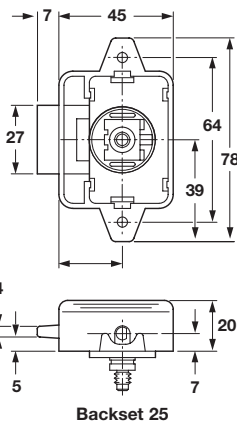
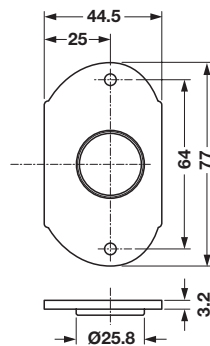
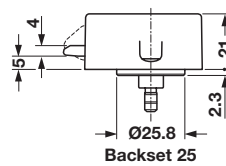
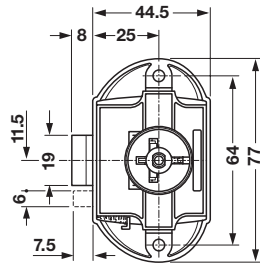
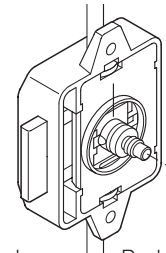


Push Button Locks

- Well suited for the recreation or boating industry
- Locks operate by push button without a key
- All push button locks can be used in wet areas
- When locked there is no protrusion of the knob



Push-Lock featuring push-button locking mechanism, used as a deadbolt lock for doors or drawers.



Push-Lock featuring push-button locking mechanism.



Push-Lock

- Features push-button locking mechanism
- Screw-mounted
- Order push-button knobs and rosettes separately

Material: Plastic

Finish/Color	Item No.
nickel-plated, matt	211.63.600
white	211.63.700
brown	211.63.100

Material: Zinc alloy

Finish	Item No.
nickel matt	211.63.620

Shim

- Placed between lock and inside of door
- Eliminates the need for different rosette heights

Material: Plastic

Color	Item No.
white	211.60.991



Push-Lock

- Features push-button locking mechanism, profile rod version
- For Ø6 mm profile rod
- For left or right-hand door application
- 25 mm backset
- Order push-button knobs and rosettes separately

Material: Plastic

Finish/Color	Item No.
nickel-plated, matt	225.22.603
brown	225.22.103

Supplied With

Pair catch hooks

Note

Profile rod locks come with a pair of color-coordinated catch hooks:

Matt nickel-plated locks, zinc die-cast

White or brown locks, plastic

Shim is used in conjunction with rosette for 19 mm (3/4") material – see next page

For 16 mm (5/8") material – use 1 pc. shim

For 13 mm (1/2") material – use 2 pcs. stacked together

Dimensional data not binding. We reserve the right to alter specifications without notice.

Flat head screws

Pages 11.137-11.138, 11.140