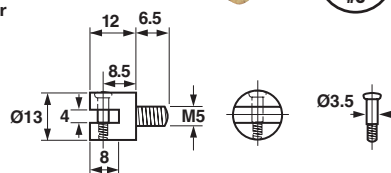
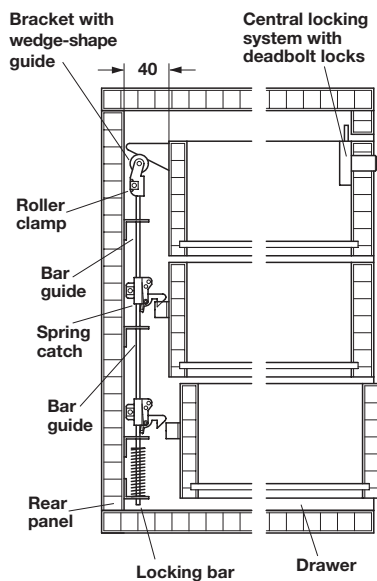
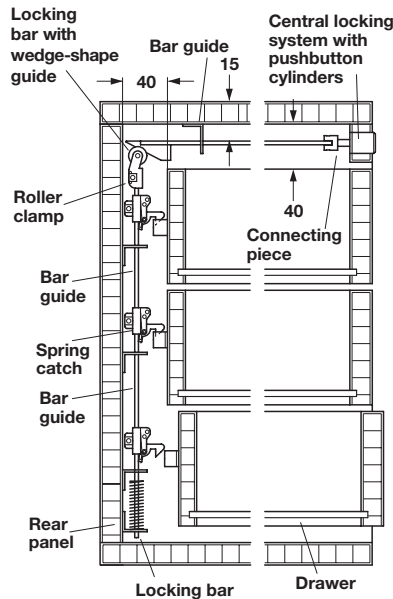


Accessories

Built-In Gang Locking System

- Rear panel
- The guides and arresting pins are designed for a bar section measuring 16x3 mm
- Hooks are spring-loaded, the drawer can be kept open as needed and shut later
- Hooks are adjustable on the locking bar enabling them to be individually adapted to drawers of varying heights
- Movement of the locking bar is affected by a roller, mounted at the upper end of the bar and actuated by a wedge-shaped driver



Roller Clamp

- For locking bar

Material: Steel

| Finish | Item No. |
|------------|------------|
| galvanized | 237.42.010 |



Bar Guide

- For locking bar, screw-mounted

Material: Steel

| Finish | Item No. |
|------------|------------|
| galvanized | 237.42.029 |



Spring Catch

- For locking bar, screw-mounted

Material: Steel

| Finish | Item No. |
|------------|------------|
| galvanized | 237.42.001 |



Drawer Component

- For spring catch, screw-mounted

Material: Steel

| Finish | Item No. |
|------------|------------|
| galvanized | 237.42.038 |

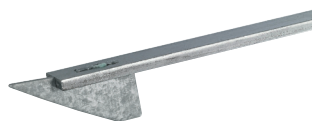


Vertical Lock Bar

- With attached spring and bar guide
Length: 600 mm

Material: Steel

| Finish | Item No. |
|------------|------------|
| galvanized | 237.42.109 |



Locking Bar

- With wedge-shape guide
Length: 600 mm

Material: Steel

| Finish | Item No. |
|------------|------------|
| galvanized | 237.42.207 |



Angled Activator

- For use with deadbolt locks

Material: Steel

| Finish | Item No. |
|------------|------------|
| galvanized | 237.42.047 |



Connecting Piece

- For use with push-button locks

Material: Brass

| | Item No. |
|--|------------|
| | 234.58.997 |

| | |
|-------------------|---------------------|
| Dead bolt locks | Page 10.38-10.39 |
| Push button locks | Page 10.57 |
| Pan head screws | Pages 11.139-11.140 |

10

Dimensions in mm
Inches are approximate