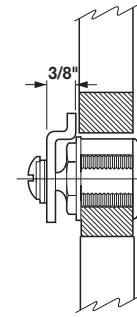
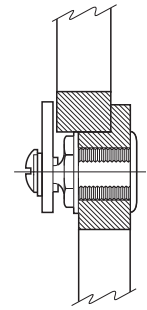


### High Security – National Lock

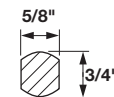
- Locks on this page meet or exceed ANSI/BHMA Grade 1 cylinder pull and cycle test
- Approved by the Woodworkers Institute (formerly WIC)
- Custom Master keying and General Master key systems available upon request
- 2500 key changes are possible
- Please include a key plan
- Plan on 2–3 weeks to produce



Flush



Lipped Overlay



### Cam Locks

- For drawer, left, or right hand applications
- 4 pin tumblers = 850 key changes
- Cam turns 90°, key turns 360°

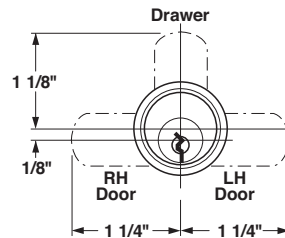
#### Keyed Different

Material: Brass

Finish	Mounting type	Length	Material Thickness	National No.	Item No
brushed chrome	flush	1 1/16"	3/4"	C8102-KD-26D	235.10.400
brushed chrome	lipped/overlay	1 3/16"	7/8"	C8103-KD-26D	235.10.300
satin brass	flush	1 1/16"	3/4"	C8102-KD-4	235.10.500
satin brass	lipped/overlay	1 3/16"	7/8"	C8103-KD-4	235.10.600

#### Supplied With

- 2 keys
- 2 cams
- Spur washer
- Rosette



#### Note

Through the use of a shifter, the 360° key travel turns the cam 90° in either direction. Actual application determines which cam position is the locked position. Each lock is furnished with an alternate cam for opposite cam turn.

### Master Keyed, Keyed Different

- Random key numbers only – no specific key numbers can be specified
- Please order master key separately (see below)

Material: Lock and Keys: Brass-plated

Strike: Brass-plated

Finish	Mounting type	Length	Material Thickness	National No.	Item No.
brushed chrome	Flush	1 1/16"	3/4"	C8102-MKKD-26D	235.10.497
brushed chrome	Lipped/overlay	1 3/16"	7/8"	C8103-MKKD-26D	235.10.397

#### Supplied With

- 2 keys
- Strike plate
- Screws

Solid lines show locked position of cam

Position of shifter on back of lock



10



### Mounting Plate for Cam Locks

- Used where spur washer will not embed into hard surfaces
- Measures: 2 1/4" x 1 1/4"

Material: Steel

National No.	Item No.
C2016-2C	210.02.081

### Master Key

- For MKKD locks above

Material: Brass

National No.	Item No.
D4299	210.02.209



### Replacement Keys

Material: Brass

Keying No.	Item No.
101	210.02.201
103	210.02.202
107	210.02.203
915	210.02.204



Dimensions in mm  
Inches are approximate