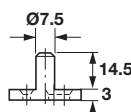
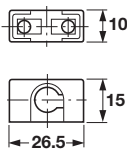
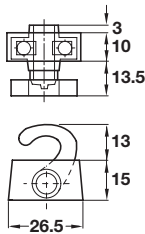
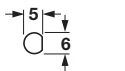
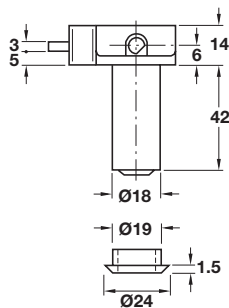
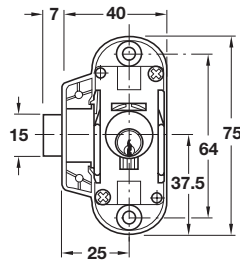
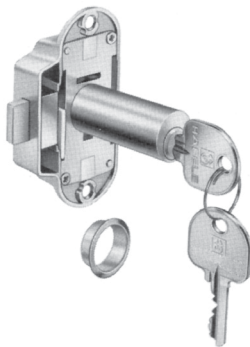


Modular Removable Core Locking System – SYMO 3000
Espagnolette Locks

- Master keying and General Master key systems available upon request
- Please include a key plan
- Plan on 8 to 10 weeks to produce



Lock Case

- H1 – keyed alike
- With extended Ø18 mm cylinder
- To accommodate furniture knob-handle made to your own design
- 5 pin levers = 10,000 key changes
- Closure travel: 180°

Material: Zinc, die-cast; Finish: nickel-plated

Handing	Item No.
left hand	225.62.910
right hand	225.62.812

Supplied With

2 keys
Cylinder

Profile Rod

- 2000 mm length

Material: Drawn Steel

Finish	Item No.
nickel-plated	226.07.209

Top and Bottom Catch Hooks

- Screw-mounted

Material: Zinc die-cast; Guides: Plastic

Finish	Item No.
nickel-plated	226.30.790
brass antique	226.30.120

Rod Guides

- Screw-mounted

Material: Zinc die-cast; Guides: Plastic

Finish	Item No.
nickel-plated	239.75.761

Locking Bolt

- Screw-mounted, adjustable

Material: Zinc die-cast

Finish	Item No.
nickel-plated	226.57.708
brass antique	226.57.101

Dimensional data not binding. We reserve the right to alter specifications without notice.

Strike plates	Page 10.53-10.54
Flat head screws	Pages 11.137–11.138, 11.140