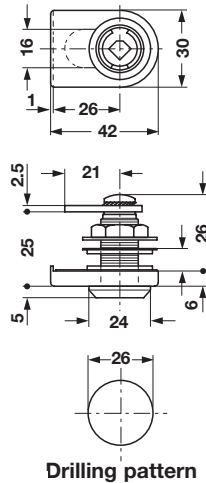


Modular Removable Core Locking System – SYMO 3000
Glass Door Locks



Cam Lock

- For cylinder cores which are inserted from the front on-site
- For glass door thickness: 4 – 10 mm (5/32" – 13/32")
- Cam: straight
- Closure direction: 180° (convertible)
- Handing: left or right versions
- Screw-mount with hexagon nut

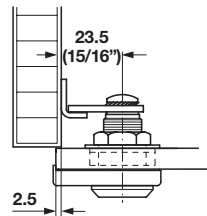
Material: Zinc, die-cast

Finish	Handing	Item No.
nickel-plated	left	233.42.600
polished	right	233.42.610
nickel-plated	left	233.42.700
matt	right	233.42.710

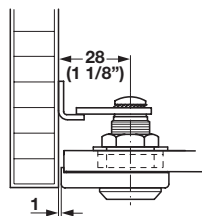
Supplied With

- Locking cam
- Mounting nut
- Angled striking plate
- Clamping plate
- Clamping rosette

Installation

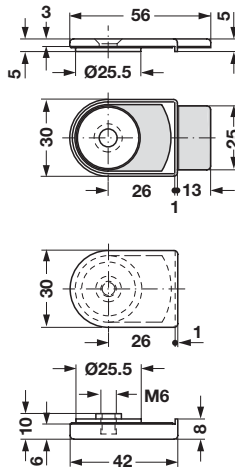


Overlay mounting



Inset mounting

Drilling pattern



Counterpiece

- For SYMO 3000 glass door cam lock for double doors
- For glass thicknesses: 4 – 10 mm (5/32" – 13/32")

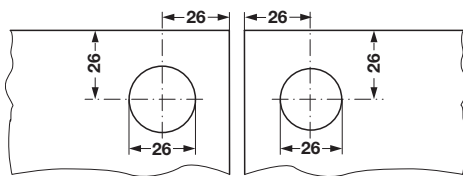
Material: Zinc die-cast

Finish	Item No.
nickel-plated polished	233.40.712

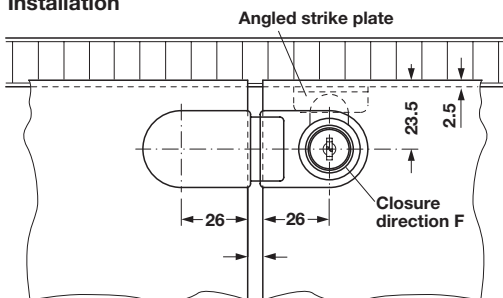
Supplied With

- 2 clamping plates
- Clamping piece
- Threaded screw M6 x 10 mm (for glass up to 8 mm (5/16") thick)
- Threaded screw M6 x 12 mm (for glass up to 8 – 10 mm (5/16" – 13/32") thick)

Drilling dimensions

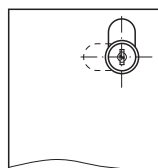


Installation

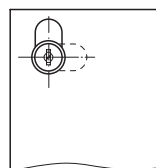


Application

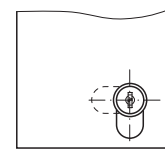
Where glass double doors are used together with the counterpiece, the following closure directions of the glass door cam lock are required:



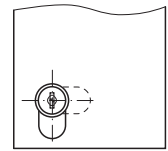
Top left:
closure direction E



Top right:
closure direction F



Bottom left:
closure direction G



Bottom right:
closure direction H

Dimensional data not binding. We reserve the right to alter specifications without notice.