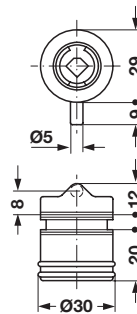
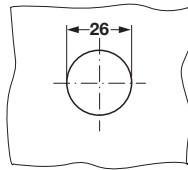
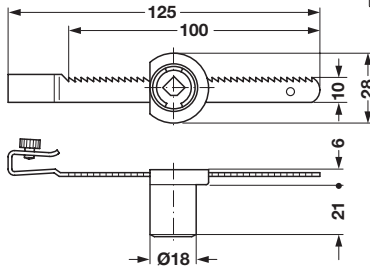
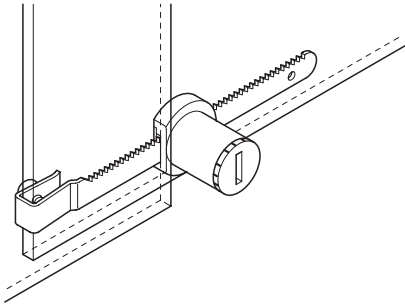
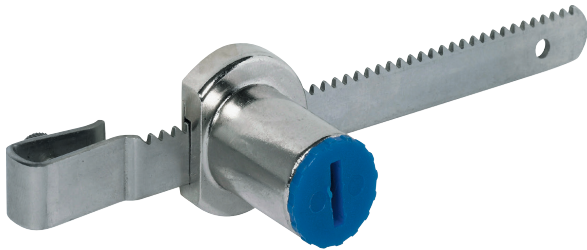
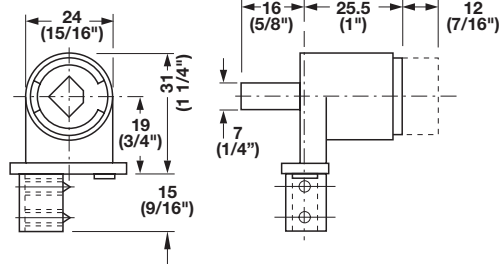


### Modular Removable Core Locking System – SYMO 3000 Glass



(Right hand lock shown)



#### Glass Door Lock

- For sliding doors
- For cylinder cores that are inserted from the front on-site
- For glass door thickness 4 – 7 mm (5/32" – 9/32")
- Installation: Rack to clip on, cylinder to slide onto rack

Material: Housing: Zinc die-cast  
Rack: Stainless steel

Finish	Item No.
nickel-plated matt	233.44.600

#### Glass Door Lock

- For hinged doors
- For cylinder cores that are inserted from the front on-site
- For glass door thickness: 4 – 6 mm (5/32" – 1/4")
- Screw-mount with back plate

Material: Zinc die-cast

Finish	Item No.
nickel-plated polished	233.43.700
nickel-plated matt	233.43.600

#### Glass Door Lock

Material: Housing: Zinc alloy; Finish: nickel-plated  
For glass thickness: 4 – 6 mm (5/32" – 1/4")

Handing	Item No.
left	233.55.600
right	233.55.601

For glass thickness: 6 – 8 mm (1/4" – 5/16")

Handing	Item No.
left	233.55.610
right	233.55.611

#### Note

Lock cores are required

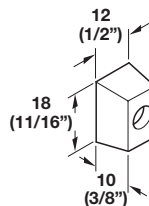


#### Buffer

- Optional
- Screw-mounted

Material: Rubber

Color	Item No.
silver	416.07.005



Lock cores	Page 10.26
Flat head screws	Pages 11.137–11.138, 11.140

Dimensions in mm  
Inches are approximate