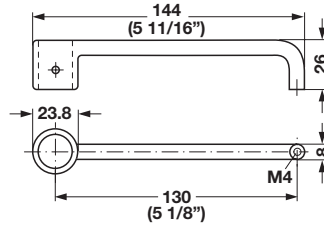


**Modular Removable Core Locking System – SYMO 3000
Specialty Locks**

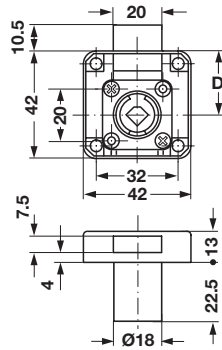


Lock Handle

- Screw-mount (to cylinder housing with 2 mm hex screw (included))
- Handle end to door with M4 screw (not included)

Material: Zinc, die-cast

Finish	Item No.
nickel-plated	232.26.699



Roller Shutter Rim Lock



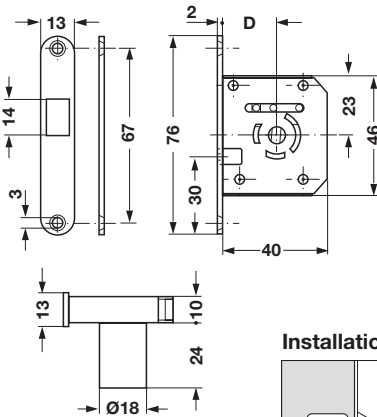
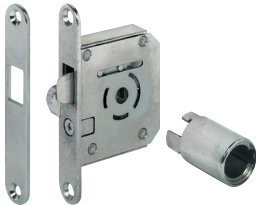
- For cylinder cores that are inserted from the front on-site
- Backset D: 25 mm (1")
- Handing: drawer version
- Screw-mount

Material: Zinc, die-cast

Finish	Item No.
nickel-plated	232.30.620

Supplied With

Strike plate



Hook Bolt Mortise Lock

- For cylinder cores that are inserted from the front on-site
- Backset D: 22.5 mm (29/32")
- Handing: right
- Recess mount and screw-mount

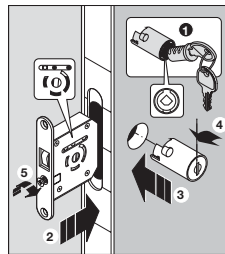
Material: Zinc, die-cast

Finish	Item No.
nickel-plated	230.36.600

Supplied With

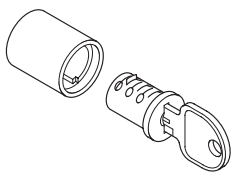
Strike plate

Installation



1. Insert the cylinder core
2. Insert the lock case into the door
3. Insert the cylinder housing through the drill hole
4. Turn the cylinder housing slightly to the left (bayonet catch)
5. Screw in the safety screw

The cylinder housing is now firmly fixed to the lock case.



Lock cores	Page 10.26
Flat head screws	Pages 11.137–11.138, 11.140

Dimensional data not binding. We reserve the right to alter specifications without notice.