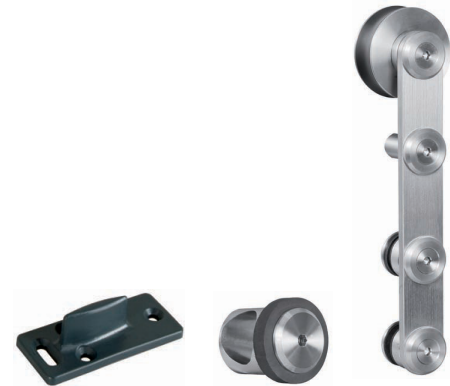
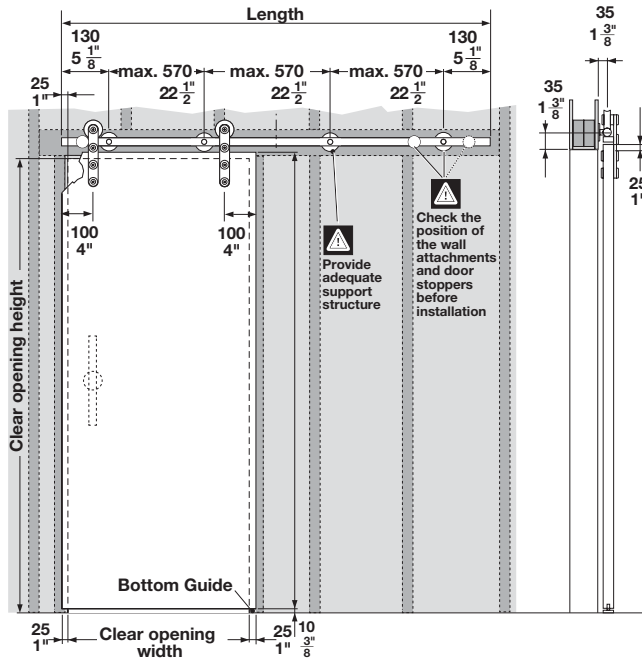


Flatec IV with Hollow Stainless Steel Track

- Maximum track weight: 100 kg (220 lbs.)
- Maximum wood thickness: 45 mm (1 3/4")
- Height adjustable: ±3 mm (1/8")
- For 1 sliding wood door
- Smooth quiet operation
- Maintenance-free
- Simple installation
- Stainless steel components



1



Set

Description	Material	Finish	Length	Item No.
For a single sliding door with upper track	Stainless steel	matt	1.8 m (5' 10 7/8")	940.64.125
			2.1 m (6' 10 11/16")	940.64.126
			2.3 m (7' 6 9/16")	940.64.127
			2.54 m (8' 4")	940.64.128

Supplied With

- 4-5 wall attachments
- 2 door stoppers
- 2 running gears
- Lower guide

Note

Additional running gears required for two door applications

Additional running gears	Page 1.104
For bi-parting sliding door applications	Page 1.104
Ceiling brackets	Page 1.104
Hanger bolts	Page 1.105

Dimensional data not binding. We reserve the right to alter specifications without notice.

Dimensions in mm
Inches are approximate